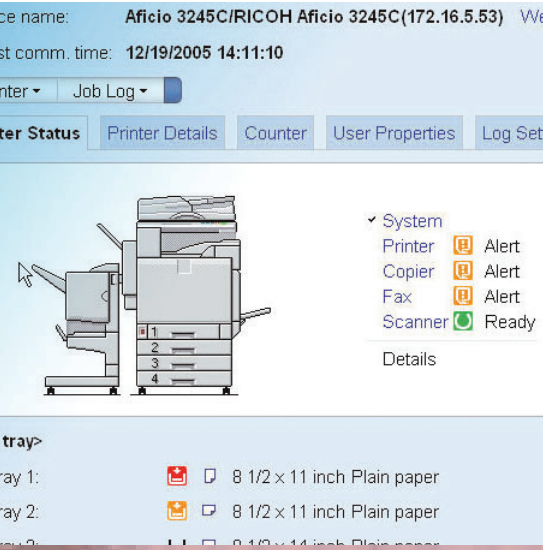


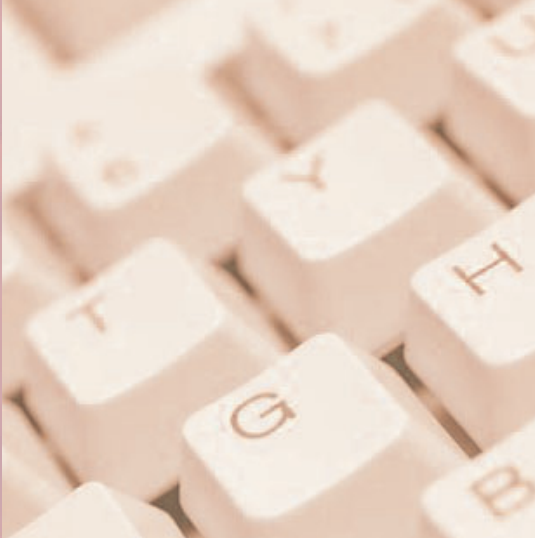
Web SmartDeviceMonitor II with Device Management

Easily manage all network devices

RICOH



organize



configure



manage



Ricoh Web SmartDeviceMonitor II

The power to be proactive.

Web SmartDeviceMonitor is now even easier to configure, organize, diagnose and update all your networked devices. And because Web SmartDeviceMonitor is Web-based, you can perform all these tasks at any time, anywhere.

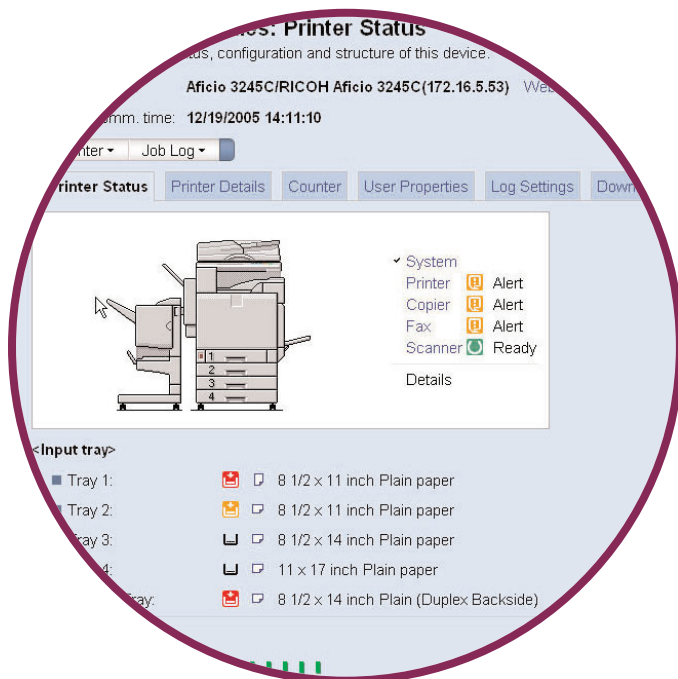
Easier to see. Easier to do.

A completely redesigned user-friendly GUI interface with support for Internet Information Services and Apache Web Servers, simplifies navigation and allows you to do more in less time. And with the new device management (DM) module, gone are the days of using up valuable time performing the usual administrative tasks.

- Make quick assessments by discovering and displaying detailed information on any networked peripheral with Device Discovery.
- Save time when you automatically categorize newly discovered devices into groups based on user-defined criteria—for instance, printers with scanning capability—with the Group Management feature.
- Eliminate the manual work of configuring and updating individual devices with automatic Remote Firmware Updates.
- Reduce your administrative workload by configuring multiple MFP devices at once using the Batch Configuration feature.
- Cut down on print-related IT calls by having e-mail error notifications sent directly to user-definable e-mail addresses.
- Keep track of project costs by viewing detailed job logs and access reports.

Supports all Ricoh printers and MFP's for maximum efficiency.

Web SmartDeviceMonitor with DM Module supports all of your printer, copier, facsimile and MFP devices, so you can streamline operations for all your groups and all your machines. And it's expandable to meet your future needs. Go to www.ricoh-usa.com for the free download, and start being your proactive best today.



The printer properties function allows users to monitor specific details of a system on a network. For example, check paper or toner levels, all from your desktop.

Web SmartNetMonitor Server Requirements

Server	CPU: Pentium III 500 MHz or higher
Hard Disk	500 MB free before installation 400 MB free at execution
Memory	256 MB RAM minimum
Operating System	Windows NT 4.0 Server (i386): Service Pack 6 or later Windows 2000 Server/Advanced: Server Service Pack 3 or later
Network Protocol	TCP/IP

Client PC Requirements

Operating System	Windows 95/98/98SE/Me Windows NT 4.0 Workstation/Server (i386): Service Pack 6 or later Windows 2000 Server/Advanced: Service Pack 2 or later Windows XP Home/Professional
Network Protocol	TCP/IP
Web Browser	Microsoft Internet Explorer 5.01 or later (For Windows 95, NT and XP, JavaVM must be installed to use NIB setup tool)
Screen Resolution	800 x 600 or higher (1024 x 768 recommended)

Printer and Multi-function Device Requirements

Network Protocol	TCP/IP
Standard MIB	Printer MIB (RFC 1759) MIB-II (RFC 1213) Host Resource MIB (RFC 2780) 10/100MB Ethernet (802.x.x compatible) Wireless LAN Devices (802.x.x compatible) IP Over 1384
Interfaces	

RICOH



Ricoh Corporation, Five Dedrick Place, West Caldwell, NJ 07006
Ricoh® is a registered trademark of Ricoh Corporation. Windows® and Windows® 95/98/Me/NT4.0/2000/XP are registered trademarks of Microsoft Corporation. PCL® is a registered trademark of Hewlett-Packard Company. All other trademarks are the property of their respective owners. Printed in U.S.A. on recycled paper. Print speed may be affected by network, application or PC performance. Specifications and external appearances are subject to change without notice. Product is shown with optional features.

CA-0521