

RICOH
imagine. change.



RICOH Predictive Insight

Real-Time Visual Analytics

Transform your data into a catalyst for business success.

Optimise your utilisation, productivity, and profitability

In today's ever-evolving print marketplace, success hinges on data-driven decisions. Leveraging a market-leading vendor-agnostic approach, RICOH Predictive Insight autonomously collects data and provides operation-wide visibility via real-time displays, empowering you to make informed decisions that drive better outcomes and sustained success.

- Track operational trends such as consumable usage, printer utilisation and shift performance
- Identify gaps in production with real-time visibility of print volume patterns
- Increase printer reliability and uptime by anticipating maintenance needs with remote support enablement



Greater Data Transparency

Using customisable, web-based dashboards, automatically consolidate and compare information across printers, shifts, and locations—eliminating data silos, highlighting trends, and enabling focused evaluations of devices, operators and jobs.

Optimised Performance

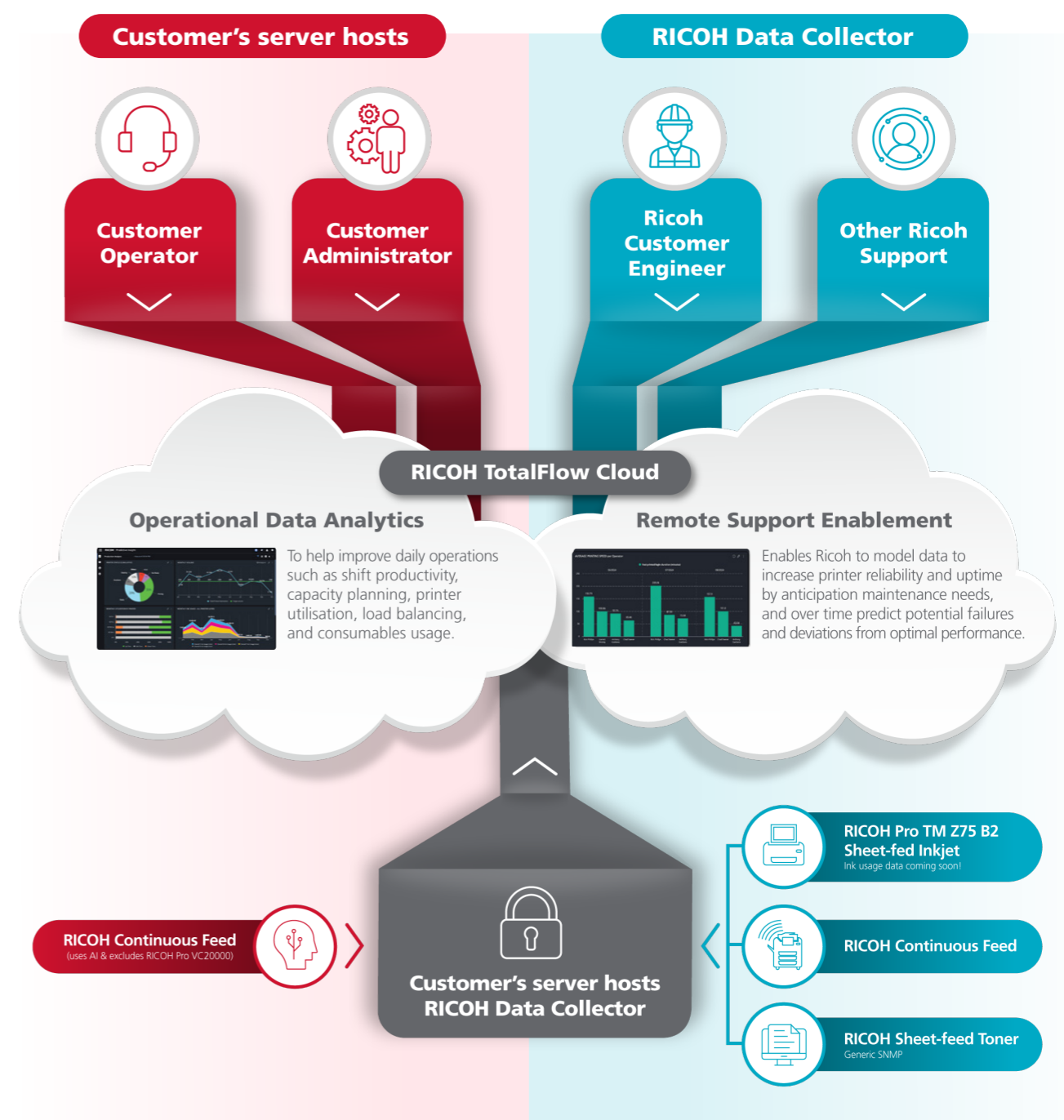
Increase operation-wide visibility into job status and production gaps, enabling the identification of inefficient patterns and driving process changes to increase device utilisation and profitability.

Actionable Business Insights

Leverage operational data to improve business outcomes, identify automation opportunities, and gain measurable business insights.

Leverages data analytics across devices

RICOH Predictive Insight can link to both continuous feed inkjet and sheet-fed devices. Continuous feed printer data tracks consumable usage to provide detailed job cost analysis and enables remote maintenance via near real-time Ricoh Support access. For sheet-fed printer data, specifically identify click violations such as black and white jobs printing on colour printers.



*Ricoh does not collect end-customer data; Ricoh is only able to identify the customer using a Ricoh printer.

Take your analytics deeper

Integrate RICOH Predictive Insight to ensure consistent information and provide additional data visibility down to the piece-level. Capture a more complete view of your operations to drive overall productivity and profitability.



RICOH ProcessDirector is a leading automated end-to-end workflow management solution designed to capture, transform, and manage data processes for greater operational efficiency and profitability.

Supported printers include Ricoh production sheet-fed and continuous feed printers, and SNMP printers from other vendors.



Turn data into decisions

Visit **ricoh-ap.com** or contact your Ricoh sales representative to request a complimentary demonstration or trial to discover how RICOH Predictive Insight can transform your data and operations.

